

**Legend**

- Proposed Onshore Development Area
- Indicative East Anglia TWO Substation Location
- Indicative East Anglia ONE North Substation Location
- Indicative National Grid GIS Substation Location

**Viewpoint:**

- ▲ 90 Degree Field of View Viewpoint
- ▼ 53.5 Degree Field of View Viewpoint



Rev	Date	By	Comment	Approved:
2	11/09/2019	LA	Second Issue (OPEN)	Prepared: LA
1	06/09/2019	LA	First Issue (OPEN)	Checked: SM

Scale @ A3
------------

**East Anglia TWO with National Grid GIS Substation**  
Viewpoint 5: Public Right of Way, near Moor Farm

Drg No	EA2-DWF-ENV-REP-IBR-000921
Rev	2
Date	11/09/19
Figure	29.37a

Coordinate System: BNG Datum: OSGB36



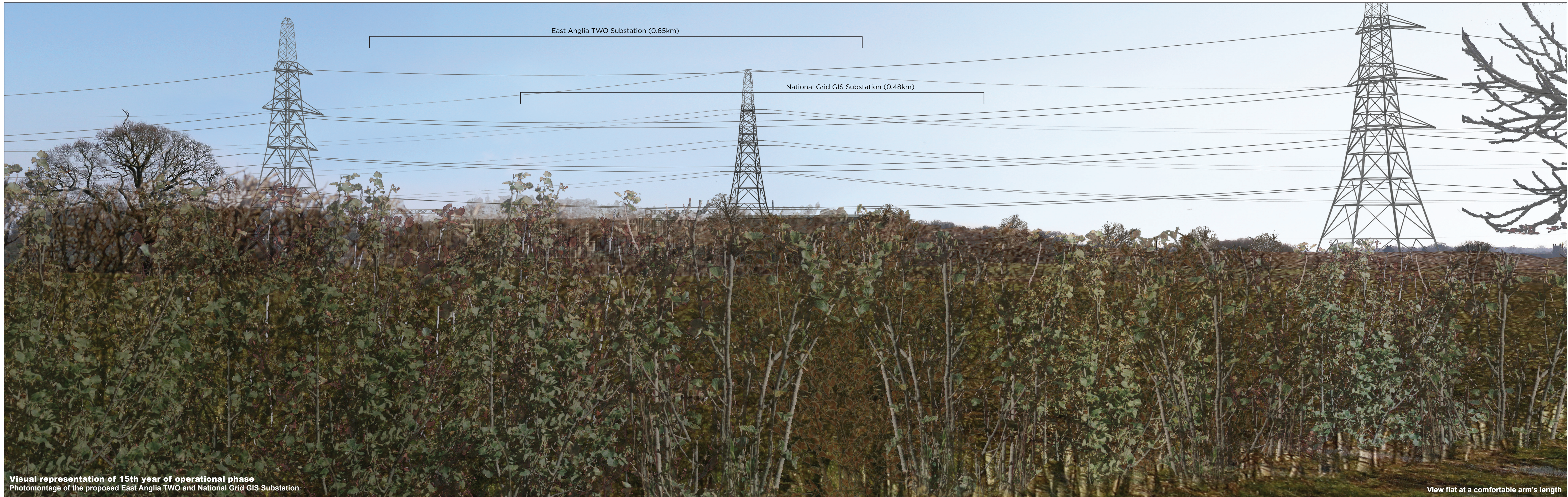
**Visual representation of 1st year of operational phase**  
 Photomontage of the proposed East Anglia TWO and National Grid GIS Substation

View flat at a comfortable arm's length

<b>OS reference:</b>	640884 E 261654 N	<b>Horizontal field of view:</b>	53.5° (planar projection)	<b>Camera:</b>	Canon EOS 5D Mark II
<b>Eye level:</b>	25 m AOD	<b>Principal viewing distance:</b>	812.5 mm	<b>Lens:</b>	50mm (Canon EF 50mm f/1.4)
<b>Direction of view:</b>	132°	<b>Paper size:</b>	841 x 297 mm (half A1)	<b>Camera height:</b>	1.5 m AGL
		<b>Correct printed image size:</b>	820 x 260 mm	<b>Date and time:</b>	22/02/2019, 13:47:28

Contains Ordnance Survey digital data © Crown copyright, All rights reserved 2019 Licence number 0100031673

**Figure: 29.37b**  
**Viewpoint 5: Public Right of Way, near Moor Farm**



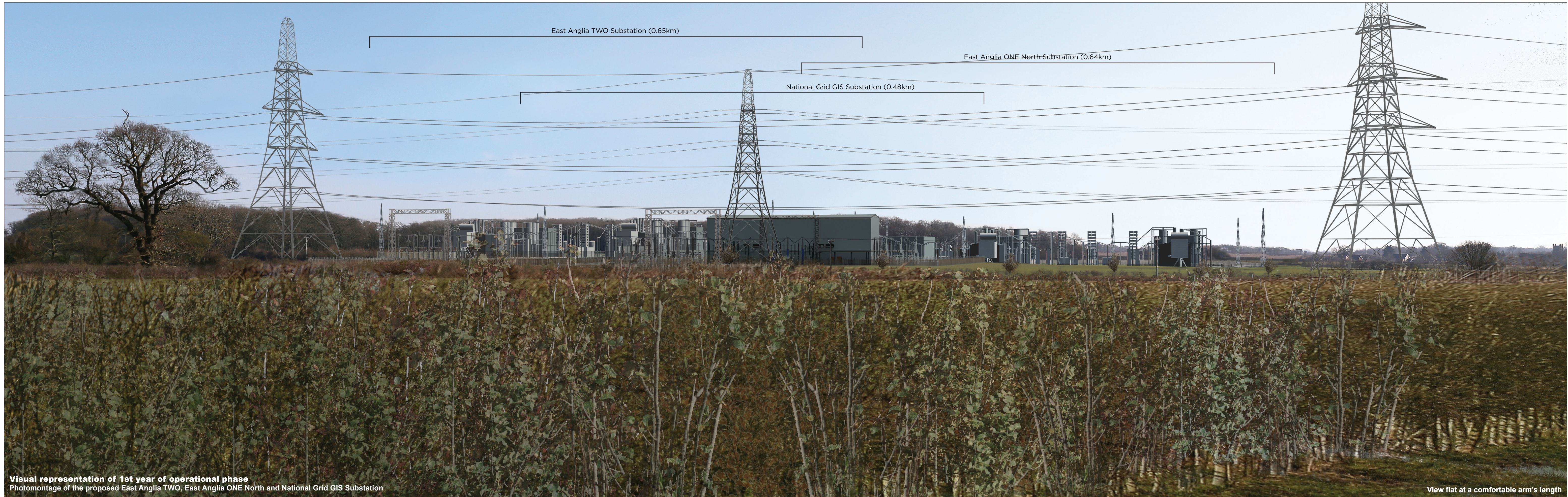
**Visual representation of 15th year of operational phase**  
 Photomontage of the proposed East Anglia TWO and National Grid GIS Substation

View flat at a comfortable arm's length

<b>OS reference:</b>	640884 E 261654 N	<b>Horizontal field of view:</b>	53.5° (planar projection)	<b>Camera:</b>	Canon EOS 5D Mark II
<b>Eye level:</b>	25 m AOD	<b>Principal viewing distance:</b>	812.5 mm	<b>Lens:</b>	50mm (Canon EF 50mm f/1.4)
<b>Direction of view:</b>	132°	<b>Paper size:</b>	841 x 297 mm (half A1)	<b>Camera height:</b>	1.5 m AGL
		<b>Correct printed image size:</b>	820 x 260 mm	<b>Date and time:</b>	22/02/2019, 13:47:28

Contains Ordnance Survey digital data © Crown copyright. All rights reserved 2019 Licence number 0100031673

**Figure: 29.37c**  
 Viewpoint 5: Public Right of Way, near Moor Farm



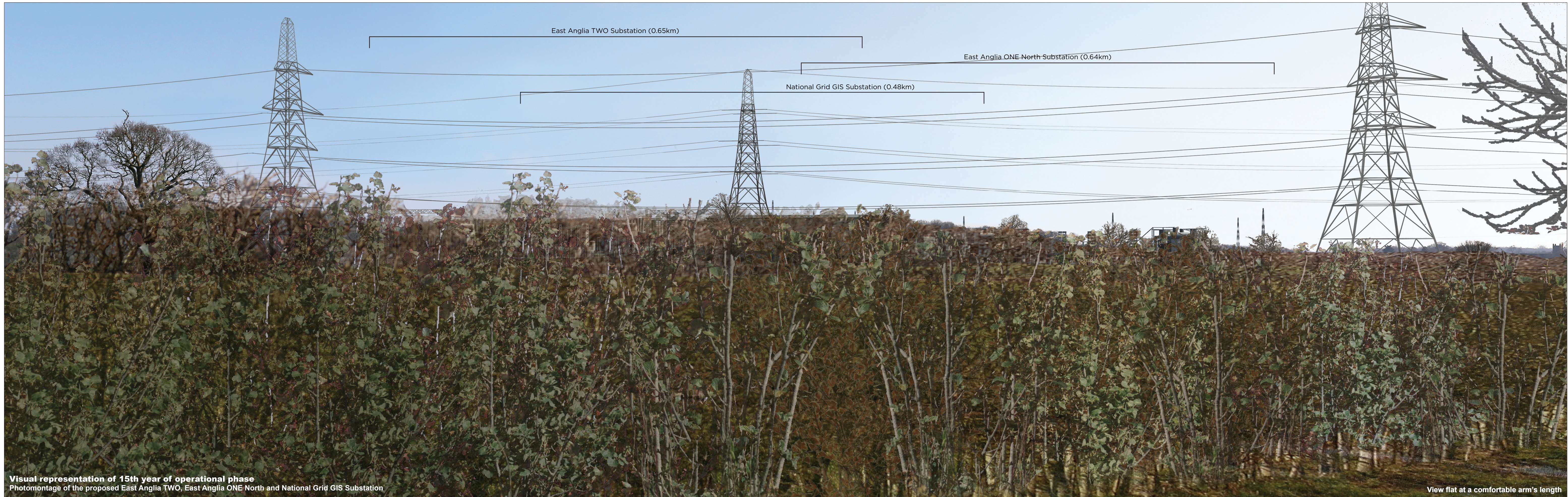
**Visual representation of 1st year of operational phase**  
 Photomontage of the proposed East Anglia TWO, East Anglia ONE North and National Grid GIS Substation

View flat at a comfortable arm's length

<b>OS reference:</b>	640884 E 261654 N	<b>Horizontal field of view:</b>	53.5° (planar projection)	<b>Camera:</b>	Canon EOS 5D Mark II
<b>Eye level:</b>	25 m AOD	<b>Principal viewing distance:</b>	812.5 mm	<b>Lens:</b>	50mm (Canon EF 50mm f/1.4)
<b>Direction of view:</b>	132°	<b>Paper size:</b>	841 x 297 mm (half A1)	<b>Camera height:</b>	1.5 m AGL
		<b>Correct printed image size:</b>	820 x 260 mm	<b>Date and time:</b>	22/02/2019, 13:47:28

Contains Ordnance Survey digital data © Crown copyright. All rights reserved 2019 Licence number 0100031673

**Figure: 29.37d**  
**Viewpoint 5: Public Right of Way, near Moor Farm**



**Visual representation of 15th year of operational phase**  
 Photomontage of the proposed East Anglia TWO, East Anglia ONE North and National Grid GIS Substation

View flat at a comfortable arm's length

<b>OS reference:</b>	640884 E 261654 N	<b>Horizontal field of view:</b>	53.5° (planar projection)	<b>Camera:</b>	Canon EOS 5D Mark II
<b>Eye level:</b>	25 m AOD	<b>Principal viewing distance:</b>	812.5 mm	<b>Lens:</b>	50mm (Canon EF 50mm f/1.4)
<b>Direction of view:</b>	132°	<b>Paper size:</b>	841 x 297 mm (half A1)	<b>Camera height:</b>	1.5 m AGL
		<b>Correct printed image size:</b>	820 x 260 mm	<b>Date and time:</b>	22/02/2019, 13:47:28

Contains Ordnance Survey digital data © Crown copyright. All rights reserved 2019 Licence number 0100031673

**Figure: 29.37e**  
 Viewpoint 5: Public Right of Way, near Moor Farm